

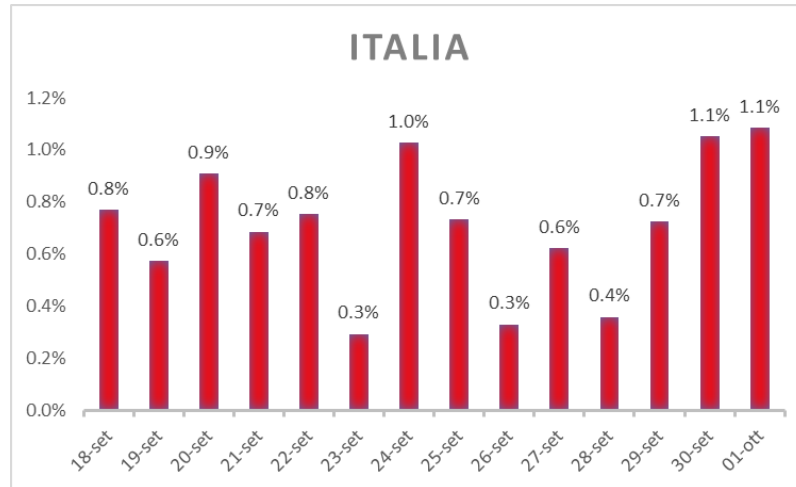
Variazione giornaliera dell'intensità del contagio (%).

"INDICE"

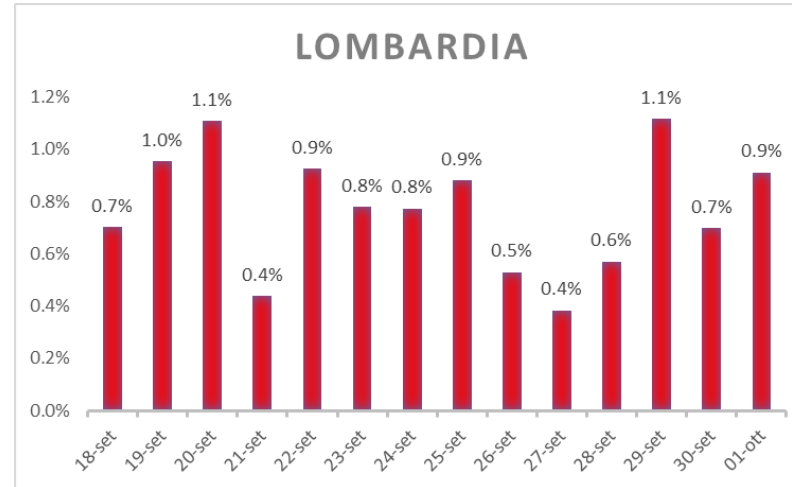
**INDice Intensità Contagio
Effettivo da Covid-19**

Aggiornamento 01/10/2020

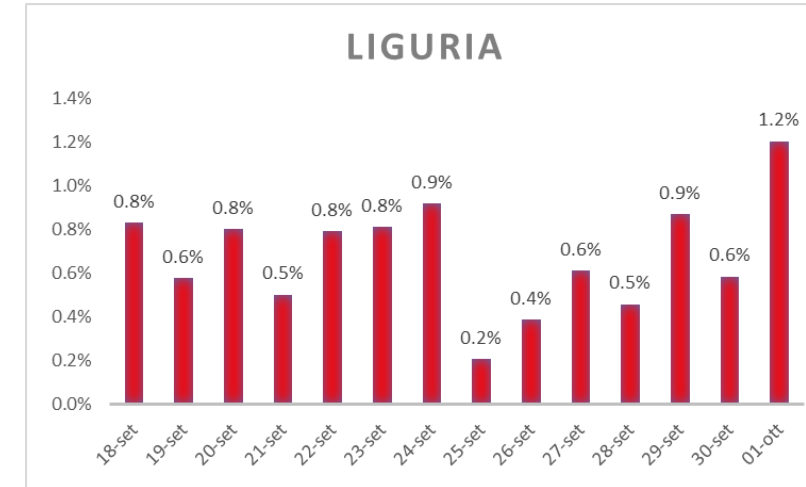
ITALIA



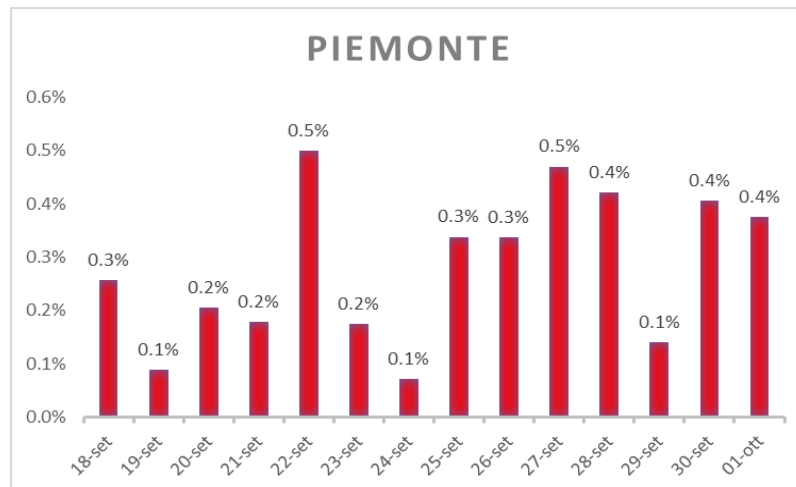
LOMBARDIA



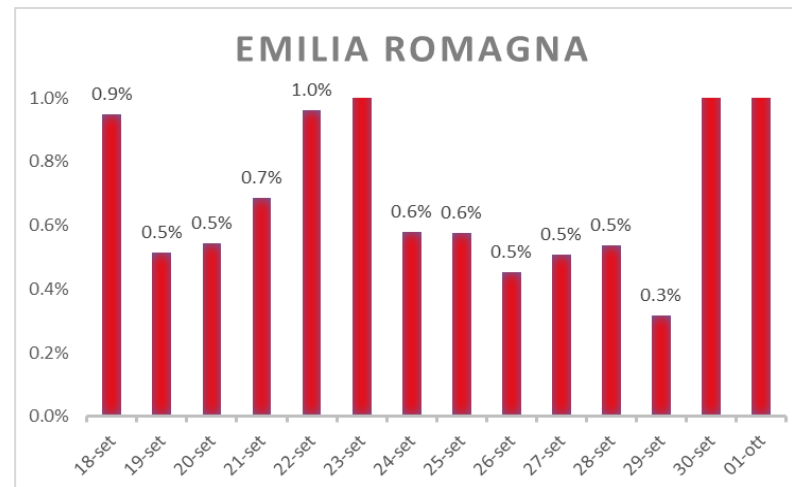
LIGURIA



PIEMONTE



EMILIA ROMAGNA



ROMAGNA (FORLÌ-CESENA, RAVENNA, RIMINI)

