

Variazione giornaliera dell'intensità del contagio (%).

"INDICE"

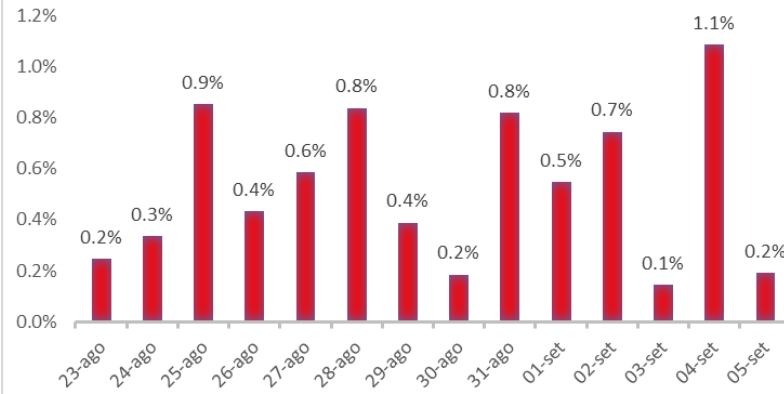
INDice Intensità Contagio
Effettivo da Covid-19

Aggiornamento 05/09/2020

ITALIA



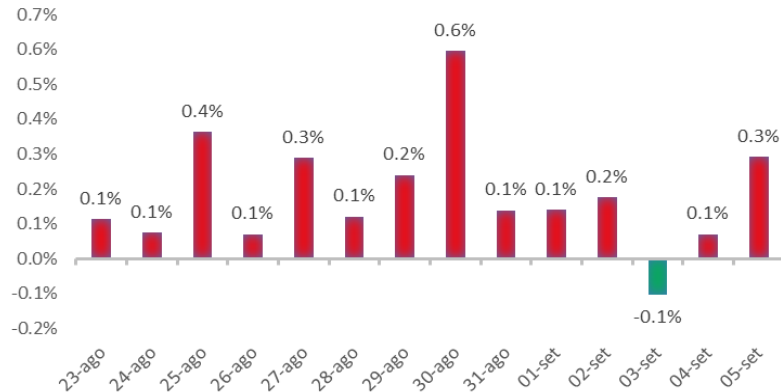
LOMBARDIA



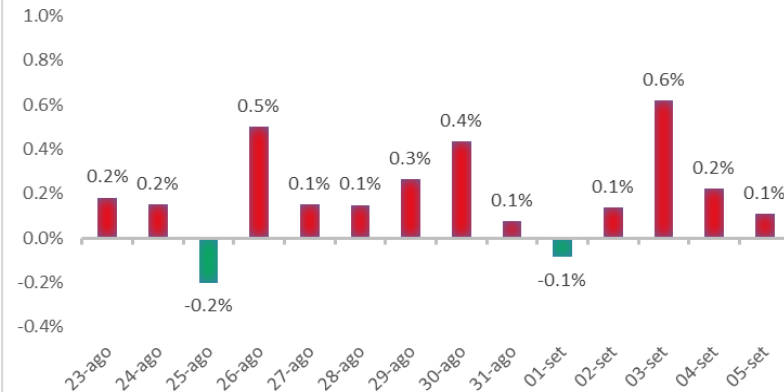
LIGURIA



PIEMONTE



EMILIA ROMAGNA



ROMAGNA (FORLÌ-CESENA, RAVENNA, RIMINI)

