

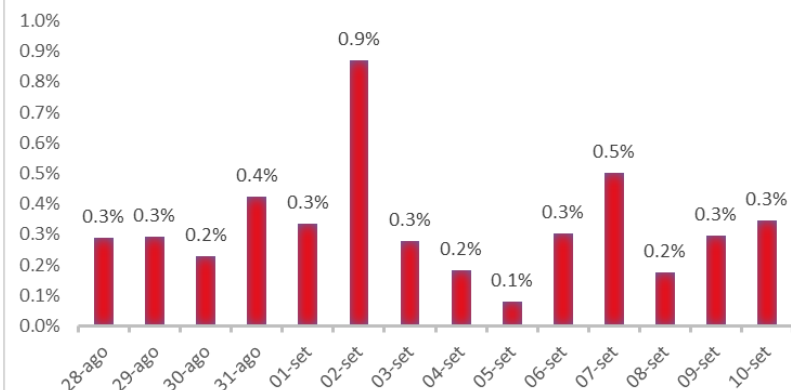
Variazione giornaliera dell'intensità del contagio (%).

"INDICE"

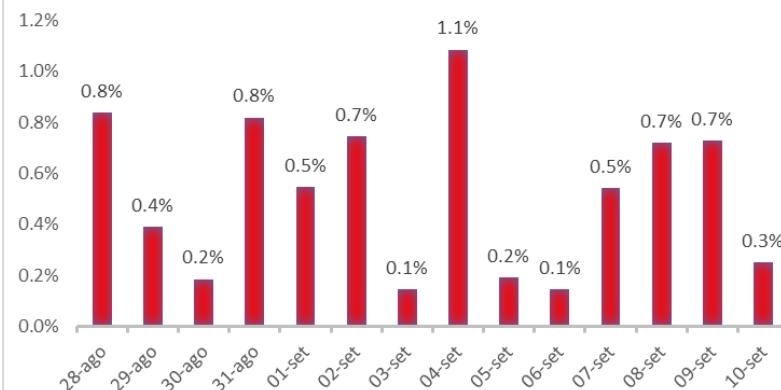
INDice Intensità Contagio Effettivo da Covid-19

Aggiornamento 10/09/2020

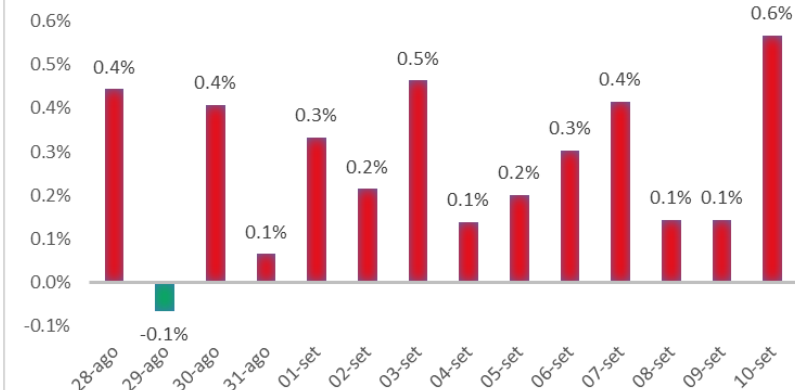
ITALIA



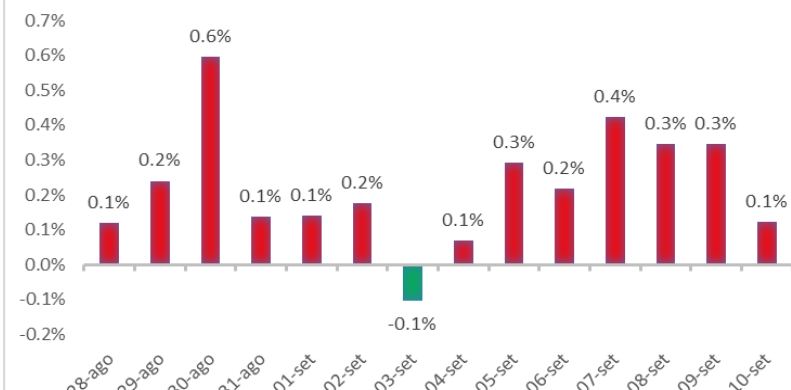
LOMBARDIA



LIGURIA



PIEMONTE



EMILIA ROMAGNA



ROMAGNA (FORLÌ-CESENA, RAVENNA, RIMINI)

