

Variazione giornaliera dell'intensità del contagio (%).

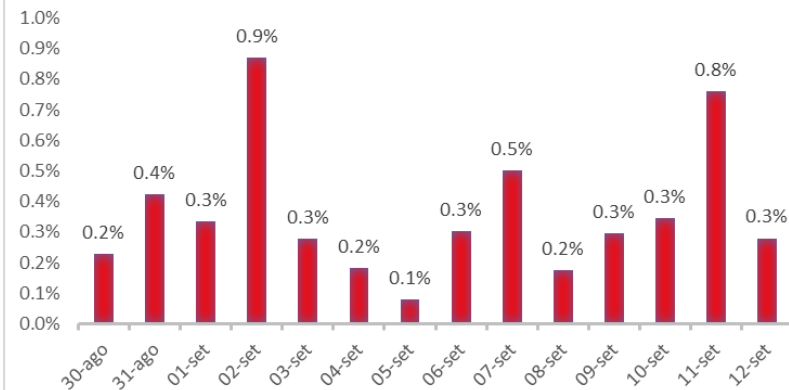
"INDICE"

INDice Intensità Contagio

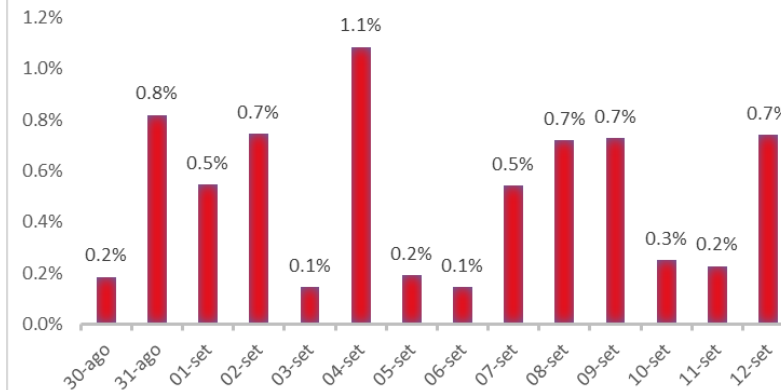
Effettivo da Covid-19

Aggiornamento 12/09/2020

ITALIA



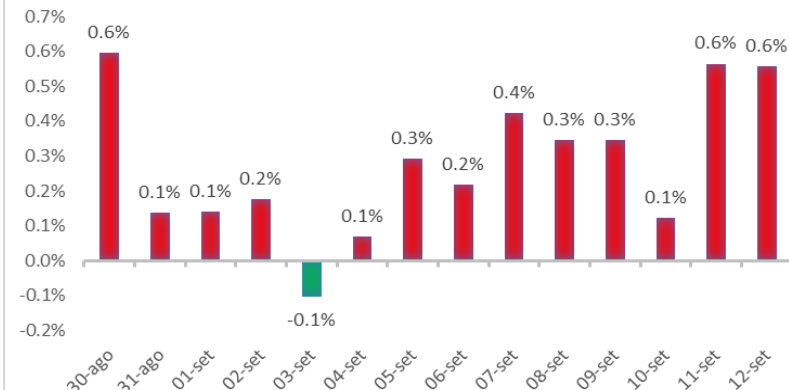
LOMBARDIA



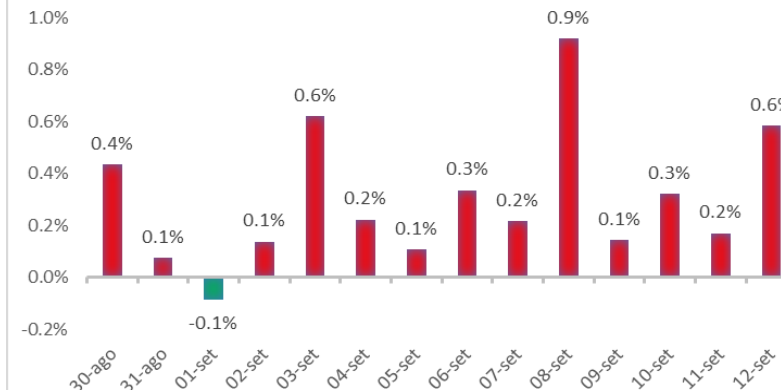
LIGURIA



PIEMONTE



EMILIA ROMAGNA



ROMAGNA (FORLÌ-CESENA, RAVENNA, RIMINI)

