

Variazione giornaliera dell'intensità del contagio (%).

"INDICE"

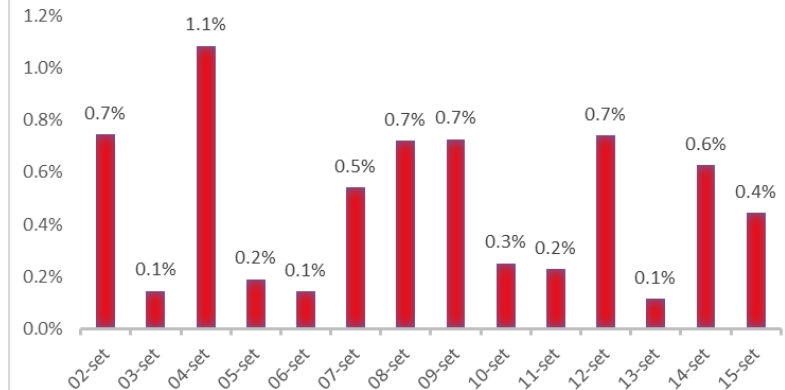
**INDice Intensità Contagio
Effettivo da Covid-19**

Aggiornamento 15/09/2020

ITALIA



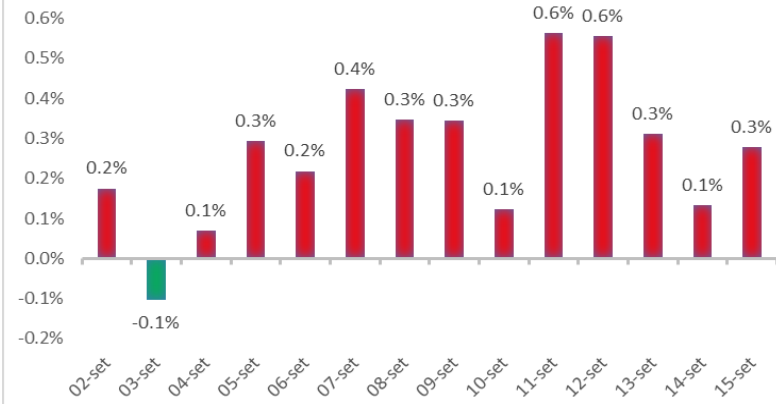
LOMBARDIA



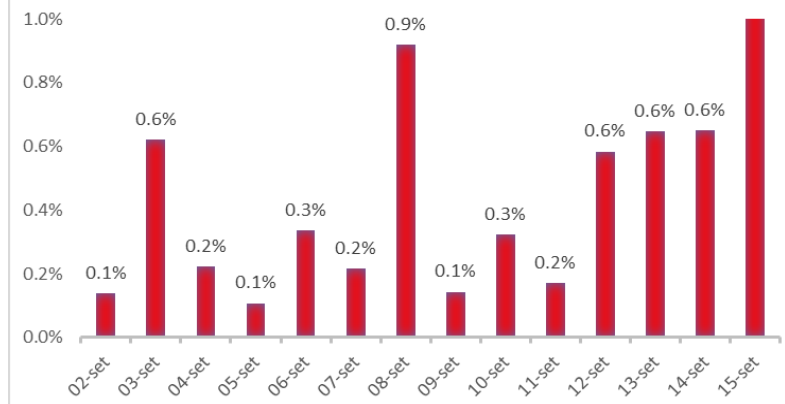
LIGURIA



PIEMONTE



EMILIA ROMAGNA



**ROMAGNA (FORLÌ-CESENA,
RAVENNA, RIMINI)**

