

Variazione giornaliera dell'intensità del contagio (%).

"INDICE"

INDice Intensità Contagio

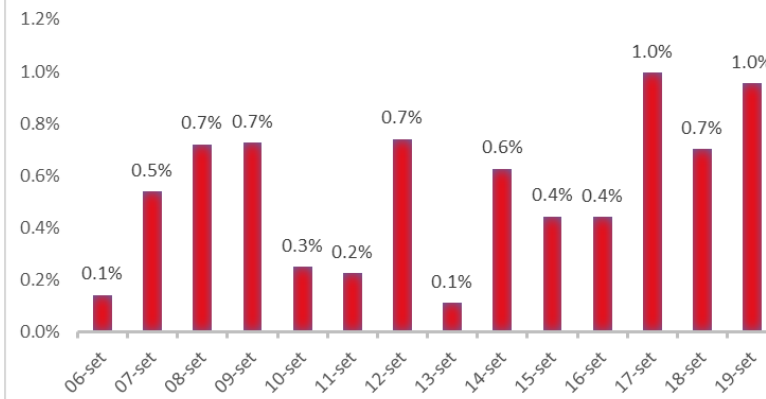
Effettivo da Covid-19

Aggiornamento 19/09/2020

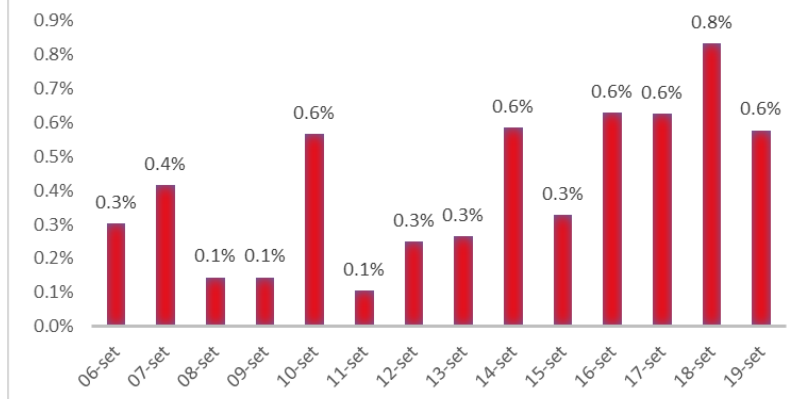
ITALIA



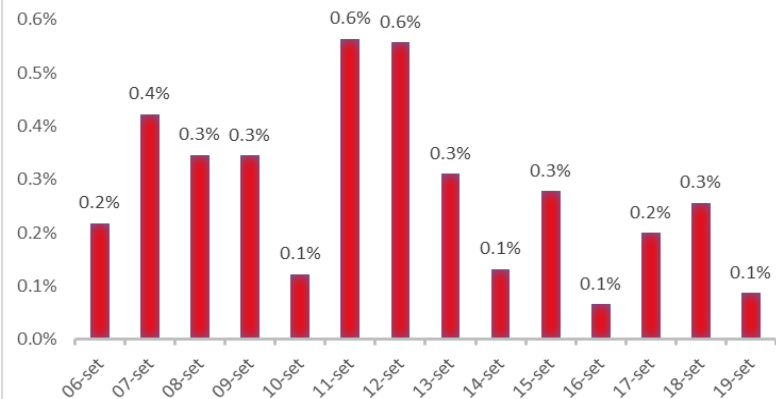
LOMBARDIA



LIGURIA



PIEMONTE



EMILIA ROMAGNA



ROMAGNA (FORLÌ-CESENA, RAVENNA, RIMINI)

